

Packed with information on Akishima♪  
Stop by any time!

## Akishima Information Center D-3

☎042-519-2331 JR Akishima Station North Exit, at bottom of stairs  
9:00-18:00 (until 17:00 from Nov. to Mar.) (closed Mon.)

The Center offers information on sights and events in the city, and sells local souvenirs. Tickets for the Tachikawa Bus are also available.

Make this your  
first stop  
in Akishima!



Products from the Friendship City of Iwazumi are also available.

You can drink  
tasty water.

Call  
Center  
interpretation  
service  
available

東京観光案内  
Tokyo Tourism  
Information Desk  
東京観光協会 東京都観光局

## Akishima Location Service

Akishima attracts on-location shooting to the city to energize the region and communicate its appeal. Many local stores, schools, parks, and other sites have been featured. Locals also volunteer as extras to liven up shoots.

You just might come  
across a production  
shoot while strolling!



Scenes from  
TV program  
shoots!

For details, see the Akishima Tourism Association  
website or contact the Secretariat.

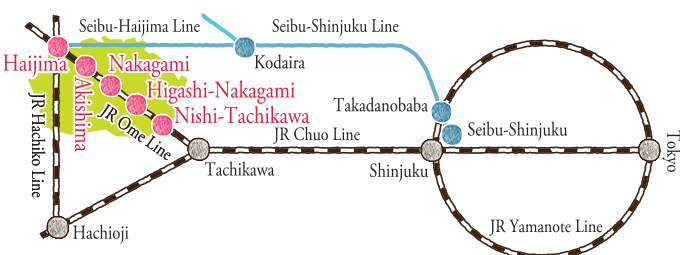


## Akishima Tourism Association

☎042-519-2114 Mon.-Fri. 9:00-17:00

The Association's activities aim to uncover the appeal of the city's nature, culture, industry, and more, helping local and out-of-town people discover those regional charms.

## Access to Akishima



### Going by public transportation

- By JR lines  
Approx. 1 hr. from Tokyo Sta. to JR Chuo Line Tachikawa Sta. by Rapid train; change to Ome Line; approx. 9 min. to Akishima Sta.
- By Seibu Line  
Approx. 27 min. from Seibu-Shinjuku Sta. or Takadanobaba Sta. to Seibu-Shinjuku Line Kodaira Sta. by Express train; change to Hajima Line; approx. 20 min. to Hajima Sta. (last stop).
- From the airport, highway buses are convenient.  
Haneda Airport ⇄ Forest Inn Showakan, Akishima Sta. North Exit, approx. 2 hr.  
Narita Airport ⇄ Forest Inn Showakan, Akishima Sta. North Exit, approx. 3.5 hr.

### Going by car

- Approx. 20 min. from Hachioji IC on Chuo Expressway
- Approx. 25 min. from Akiruno IC on Ken-O Expressway

Publisher: Industry Promotion Section, Residents' Division, Akishima City  
Planning/editing: Akishima Tourism Association  
202-A Akishima Showa Daiichi Bldg.,  
562-8 Tanaka-cho, Akishima City, Tokyo 196-0014  
TEL 042-519-2114 FAX 042-519-2144  
<http://www.akishima-kanko.org/>

Articles and photographs on these pages may not be reproduced without permission.

Published March 2019 ㊦

# Akishima and Whales

Discover fossils  
of whales!

In the summer of 1961, the nearly complete fossilized skeleton of a whale was discovered in the Tama River within the city environs. Since then, it has been familiar to residents as "Akishima Kujira."



Length: 13.5 m

Excavated from a stratum about two million years old, the fossilized whale was recognized as a new species in 2018 and has been scientifically named *Eschrichtius akishimaensis* (Japanese name: Akishima kujira).

whale symbols can be found all around Akishima

Try to find  
the whale symbols!



Konita  
Police Box  
A-3



Haijima Sta. Free Passage  
Stained Glass  
B-2



Kujira Road  
Shopping Street  
G-4



Streetlights  
E-3  
G-4

Mosaic by Haijima  
High School students!

Whale Mural  
C-3



Akishima  
Ekimae  
Post Office  
Landscape  
Stamp  
D-3



Manhole Covers  
Around the city

How about  
a commemorative  
manhole card?  
(Available at the Akishima  
Information Center)

## Make these your souvenirs of Akishima!



Bun with  
Sweet Bean Paste  
Tousen  
☎042-543-1041 D-3  
9:00-18:30 (closed Wed.)



Rakugan Sweets  
Sakaiya Seika  
☎042-541-0668 F-4  
8:00-18:30



Cookies  
Patisserie Pourquoi Pas?  
☎042-545-0972 F-4  
10:00-19:30 (closed Wed.)

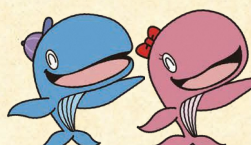
## Akishima Great Whale Float

(renewed in 2019)



This whale lives  
the whale Festival  
Parade!

@mari



Official municipal characters  
Akkii & Airan

# Akishima and Water

Surrounded by the Tama River and the Tamagawa Aqueduct, Akishima enjoys abundant water. This is the only place in Tokyo where you can drink great-tasting tap water from 100% deep groundwater. Drawn from strata over 70 meters deep, it is rich in minerals with few impurities.



The tap water  
tastes good!

Akishima is a city for enjoying great-tasting water and scenery with water.

## Exacting cafés that use Akishima water!

Many cafés in the city  
make use of its excellent water.



Coffee House Ryojinboku  
☎042-541-1269 F-4  
8:30-17:00 (closed Fri.)

Coffee and Cake Café Murari  
☎042-546-5780 10:30-19:00/ E-3  
Sun., holidays until 18:00 (closed Mon.)

Book & Café  
Mulberry Field F-3

☎042-544-3746 Mon.-Fri. 7:00-19:00/  
Sat. 8:30-19:00/Sun. 8:30-18:30

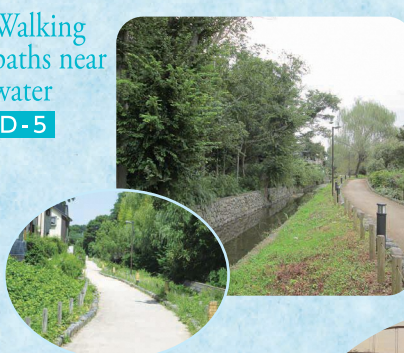


Isana Brewing  
Brewery & Roastery D-3

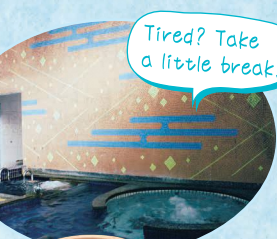
☎050-5327-9884 Weekdays 17:30-22:00/  
Weekends, holidays 12:30-22:00 (closed Wed., etc.)

## Experience water up close on leisurely strolls

Walking  
paths near  
water D-5



• Ryushinji B-4  
• Suwa Shrine E-5



Tired? Take  
a little break!



Enjoy cycling  
or jogging, too,  
while you enjoy the scenery!

Tama River

• Showa-yu F-4  
• Fujimi-yu F-3  
• Sanko-yu G-5

☎042-541-3122 15:00-23:00/Sun. 8:00-11:30 (closed Mon.)  
☎042-541-2081 12:00-next day 10:00 (closed Mon., or Tue. if Mon. is holiday)  
☎042-541-2669 15:30-23:00 (closed Tue.)



Water that brings materials to life  
Natural indigo dyeing

There are creators who  
have moved to Akishima  
after hearing about  
its clean water.



Indigo dyed products are available at the Akishima Information Center.

# Akishima Tourism Guide

Akishima, City of Water and Whales

AkishiMAP

